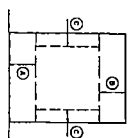


2978801

NOTE: Fairway Estates, Inc. is a corporation organized under the laws of the State of Illinois. It is not a partnership and is not a trust. It is not a partnership and is not a trust. It is not a partnership and is not a trust.

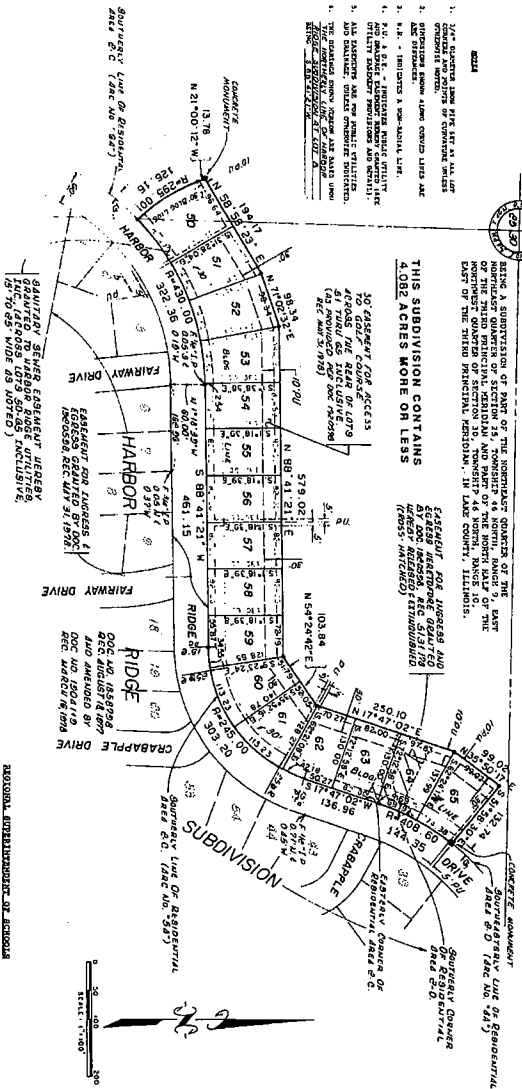
FAIRWAY ESTATES AT ANTIOCH GOLF CLUB UNIT 1

FINAL SUBDIVISION PLAT



1. FROM THE CORNER OF THE SECTION 16, TOWNSHIP 36 N., RANGE 10 E., COUNTY OF LAKE, ILLINOIS, TO THE CORNER OF THE SECTION 16, TOWNSHIP 36 N., RANGE 10 E., COUNTY OF LAKE, ILLINOIS, A DISTANCE OF 110.00 FEET.

THIS SUBDIVISION CONTAINS 4.082 ACRES MORE OR LESS



STATE OF ILLINOIS, COUNTY OF LAKE, A.D. 1992. APPROVED THIS 31 DAY OF December, A.D. 1992.

STATE OF ILLINOIS, COUNTY OF LAKE, A.D. 1992. APPROVED THIS 31 DAY OF December, A.D. 1992.

STATE OF ILLINOIS, COUNTY OF LAKE, A.D. 1992. APPROVED THIS 31 DAY OF December, A.D. 1992.

STATE OF ILLINOIS, COUNTY OF LAKE, A.D. 1992. APPROVED THIS 31 DAY OF December, A.D. 1992.

STATE OF ILLINOIS, COUNTY OF LAKE, A.D. 1992. APPROVED THIS 31 DAY OF December, A.D. 1992.

STATE OF ILLINOIS, COUNTY OF LAKE, A.D. 1992. APPROVED THIS 31 DAY OF December, A.D. 1992.

STATE OF ILLINOIS, COUNTY OF LAKE, A.D. 1992. APPROVED THIS 31 DAY OF December, A.D. 1992.

STATE OF ILLINOIS, COUNTY OF LAKE, A.D. 1992. APPROVED THIS 31 DAY OF December, A.D. 1992.

STATE OF ILLINOIS, COUNTY OF LAKE, A.D. 1992. APPROVED THIS 31 DAY OF December, A.D. 1992.

STATE OF ILLINOIS, COUNTY OF LAKE, A.D. 1992. APPROVED THIS 31 DAY OF December, A.D. 1992.

STATE OF ILLINOIS, COUNTY OF LAKE, A.D. 1992. APPROVED THIS 31 DAY OF December, A.D. 1992.

STATE OF ILLINOIS, COUNTY OF LAKE, A.D. 1992. APPROVED THIS 31 DAY OF December, A.D. 1992.

STATE OF ILLINOIS, COUNTY OF LAKE, A.D. 1992. APPROVED THIS 31 DAY OF December, A.D. 1992.

STATE OF ILLINOIS, COUNTY OF LAKE, A.D. 1992. APPROVED THIS 31 DAY OF December, A.D. 1992.

STATE OF ILLINOIS, COUNTY OF LAKE, A.D. 1992. APPROVED THIS 31 DAY OF December, A.D. 1992.

STATE OF ILLINOIS, COUNTY OF LAKE, A.D. 1992. APPROVED THIS 31 DAY OF December, A.D. 1992.

STATE OF ILLINOIS, COUNTY OF LAKE, A.D. 1992. APPROVED THIS 31 DAY OF December, A.D. 1992.

STATE OF ILLINOIS, COUNTY OF LAKE, A.D. 1992. APPROVED THIS 31 DAY OF December, A.D. 1992.

STATE OF ILLINOIS, COUNTY OF LAKE, A.D. 1992. APPROVED THIS 31 DAY OF December, A.D. 1992.

STATE OF ILLINOIS, COUNTY OF LAKE, A.D. 1992. APPROVED THIS 31 DAY OF December, A.D. 1992.

STATE OF ILLINOIS, COUNTY OF LAKE, A.D. 1992. APPROVED THIS 31 DAY OF December, A.D. 1992.

STATE OF ILLINOIS, COUNTY OF LAKE, A.D. 1992. APPROVED THIS 31 DAY OF December, A.D. 1992.

STATE OF ILLINOIS, COUNTY OF LAKE, A.D. 1992. APPROVED THIS 31 DAY OF December, A.D. 1992.

STATE OF ILLINOIS, COUNTY OF LAKE, A.D. 1992. APPROVED THIS 31 DAY OF December, A.D. 1992.

STATE OF ILLINOIS, COUNTY OF LAKE, A.D. 1992. APPROVED THIS 31 DAY OF December, A.D. 1992.

STATE OF ILLINOIS, COUNTY OF LAKE, A.D. 1992. APPROVED THIS 31 DAY OF December, A.D. 1992.

STATE OF ILLINOIS, COUNTY OF LAKE, A.D. 1992. APPROVED THIS 31 DAY OF December, A.D. 1992.

STATE OF ILLINOIS, COUNTY OF LAKE, A.D. 1992. APPROVED THIS 31 DAY OF December, A.D. 1992.

STATE OF ILLINOIS, COUNTY OF LAKE, A.D. 1992. APPROVED THIS 31 DAY OF December, A.D. 1992.

STATE OF ILLINOIS, COUNTY OF LAKE, A.D. 1992. APPROVED THIS 31 DAY OF December, A.D. 1992.

2978801

STATE OF ILLINOIS, COUNTY OF LAKE, A.D. 1992. APPROVED THIS 31 DAY OF December, A.D. 1992.

STATE OF ILLINOIS, COUNTY OF LAKE, A.D. 1992. APPROVED THIS 31 DAY OF December, A.D. 1992.

STATE OF ILLINOIS, COUNTY OF LAKE, A.D. 1992. APPROVED THIS 31 DAY OF December, A.D. 1992.

STATE OF ILLINOIS, COUNTY OF LAKE, A.D. 1992. APPROVED THIS 31 DAY OF December, A.D. 1992.

STATE OF ILLINOIS, COUNTY OF LAKE, A.D. 1992. APPROVED THIS 31 DAY OF December, A.D. 1992.

STATE OF ILLINOIS, COUNTY OF LAKE, A.D. 1992. APPROVED THIS 31 DAY OF December, A.D. 1992.

STATE OF ILLINOIS, COUNTY OF LAKE, A.D. 1992. APPROVED THIS 31 DAY OF December, A.D. 1992.

STATE OF ILLINOIS, COUNTY OF LAKE, A.D. 1992. APPROVED THIS 31 DAY OF December, A.D. 1992.

STATE OF ILLINOIS, COUNTY OF LAKE, A.D. 1992. APPROVED THIS 31 DAY OF December, A.D. 1992.

STATE OF ILLINOIS, COUNTY OF LAKE, A.D. 1992. APPROVED THIS 31 DAY OF December, A.D. 1992.

